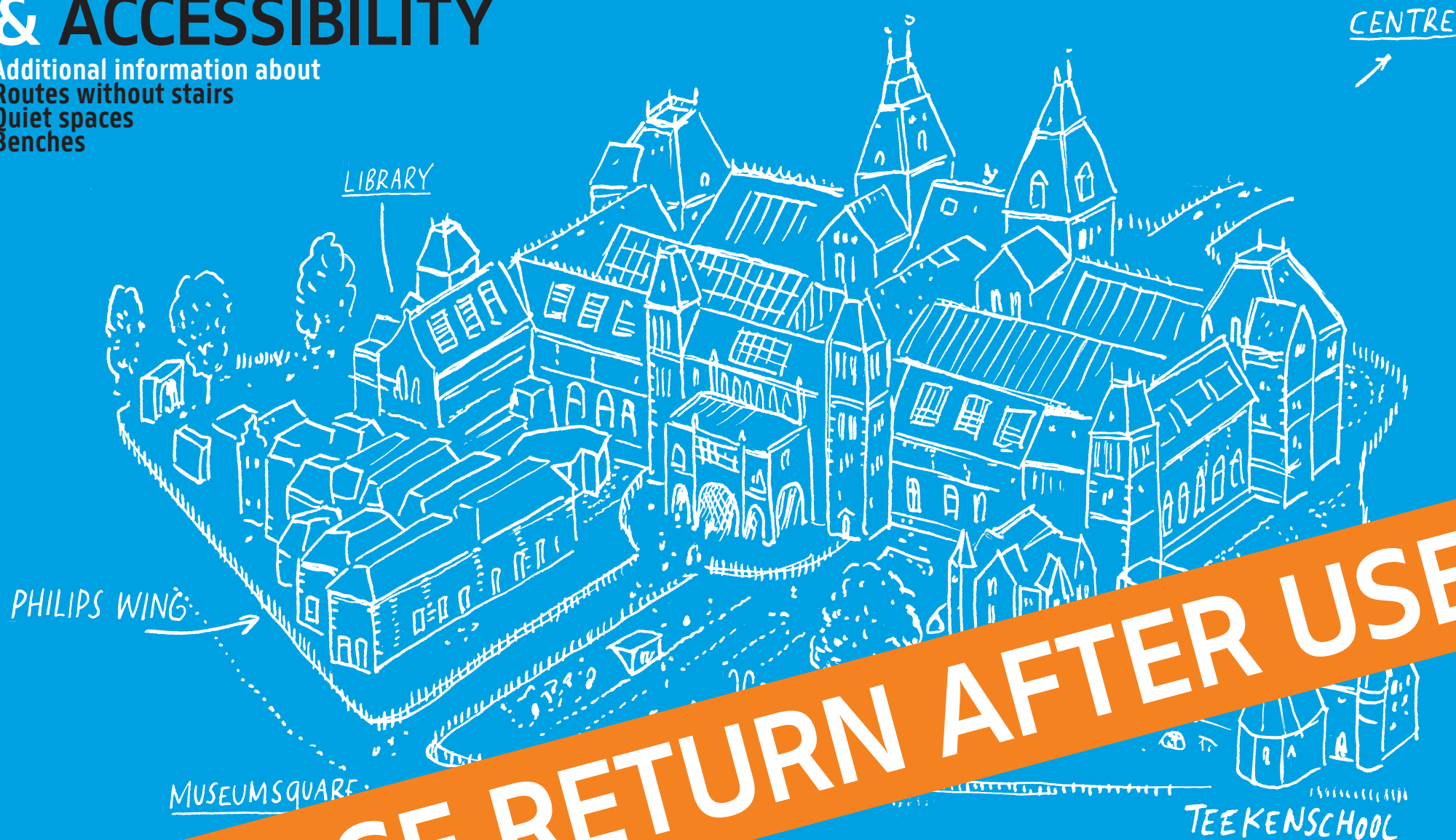


# FLOORPLAN, HIGHLIGHTS & ACCESSIBILITY

Additional information about  
Routes without stairs  
Quiet spaces  
Benches



**PLEASE RETURN AFTER USE**

# RIJKS MUSEUM

# RIJKS MUSEUM

1950–2000

1600–1650

1700–1800

Special Collections



1900–1950

1650–1700

1800–1900

1100–1600

# WELCOME IN THE RIJKSMUSEUM!

The entire museum is accessible to visitors with limited mobility. The various colours in this floorplan afford additional information regarding this.

The blue arrows indicate how visitors in a wheelchair, mobility scooter, with a walker, or a pushchair can reach the galleries from the Atrium. The lifts and accessible toilets are indicated in blue on the map.

The green spaces are generally quieter. The white spaces alternately busy or quiet. Benches on every level are indicated. Visitors can borrow folding stools, wheelchairs, walkers, and canes free of charge at the Information Desk.

We hope you enjoy your visit to the Rijksmuseum!

We are committed to making the Rijksmuseum accessible to all audiences. Should you have questions or comments regarding accessibility in the museum, please email us at: [access@rijksmuseum.nl](mailto:access@rijksmuseum.nl)



QUIET SPACES



INFORMATION DESK



LIFT



ACCESSIBLE TOILET



WHEELCHAIR  
ROUTE



STAIRS



TOILETS



BABY CHANGE



BENCH



CAFÉ



CLOAKROOM

---

## LEGENDA

# SPECIAL COLLECTIONS

0

1100–1600



**0.7**  
DELFTWARE



**0.9**  
FASHION & JEWELS



**0.1**  
GEERTGEN TOT  
SINT JANS



**0.2**  
FRA ANGELICO



**0.4**  
CIVIC GUARD



**0.6**  
JAN VAN SCOREL



**0.12**  
ARMS



**0.13**  
SHIP MODELS



**0.4**  
WEEPERS



**0.6**  
JACOB CORNELISZ  
VAN OOSTANEN



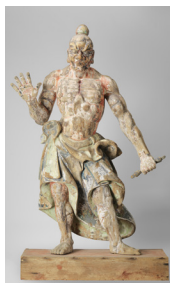
**0.6**  
JOACHIM BUECKELAAR



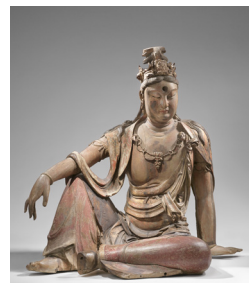
**A1**  
SHIVA



**A1**  
MANJUSHRI



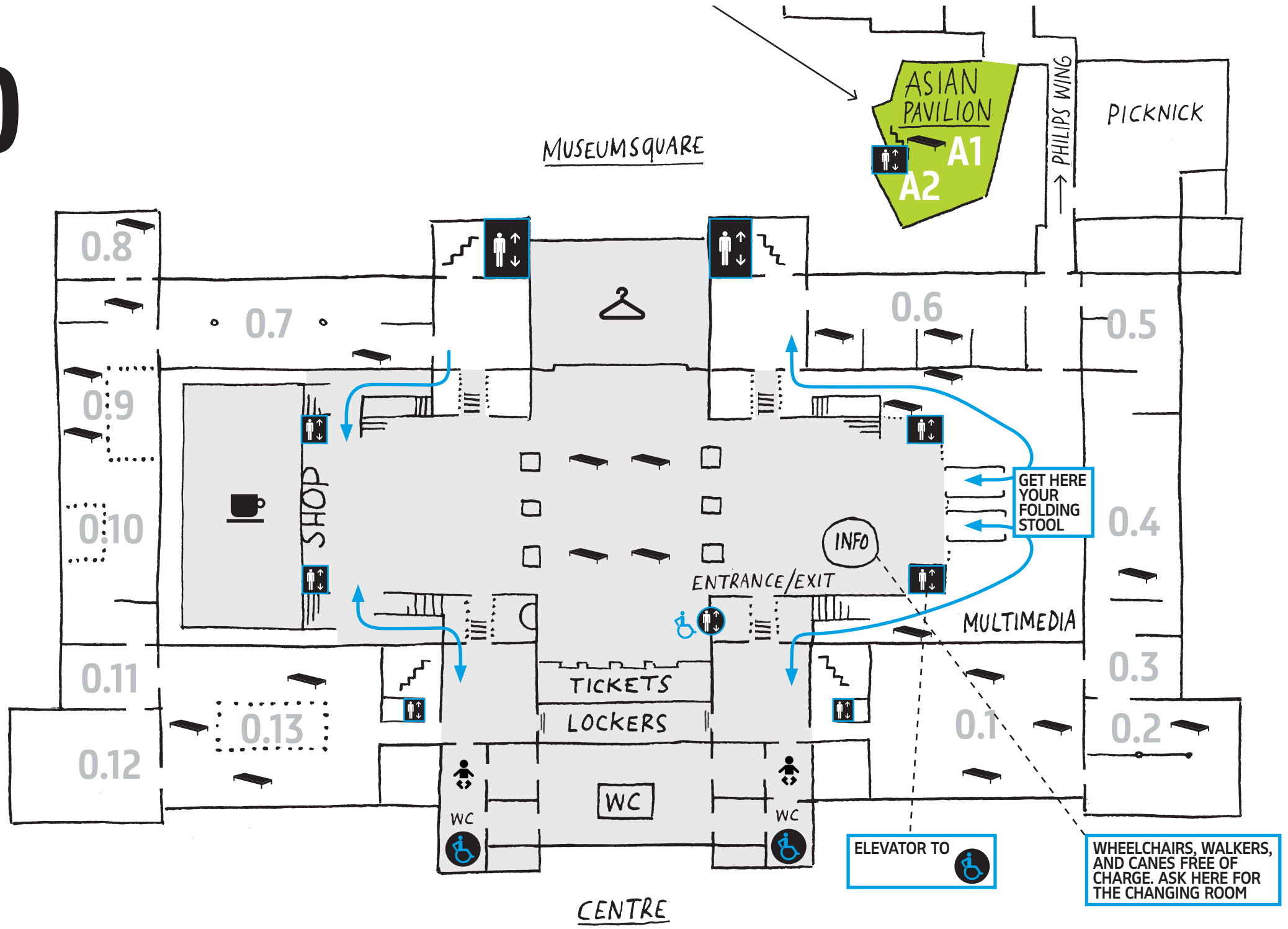
**A2**  
TEMPLE  
GUARDS



**A2**  
GUANYIN



0



SPECIAL COLLECTIONS

0

1100-1600





1.1  
CORNELIS TROOST



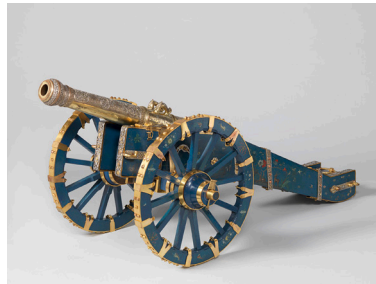
1.1  
SILVER



1.3  
VANMOUR



1.4  
MEISSEN



1.5  
CANON



1.7  
HAARLEM  
PERIOD ROOM



1.9  
ÉTIENNE-MAURICE  
FALCONET



1.11  
JEAN-ÉTIENNE  
LIOTARD



1.12  
WATERLOO



1.13  
FRANCISCO DE GOYA



1.17  
DIORAMA



1.17  
JAVANESE  
OFFICIALS



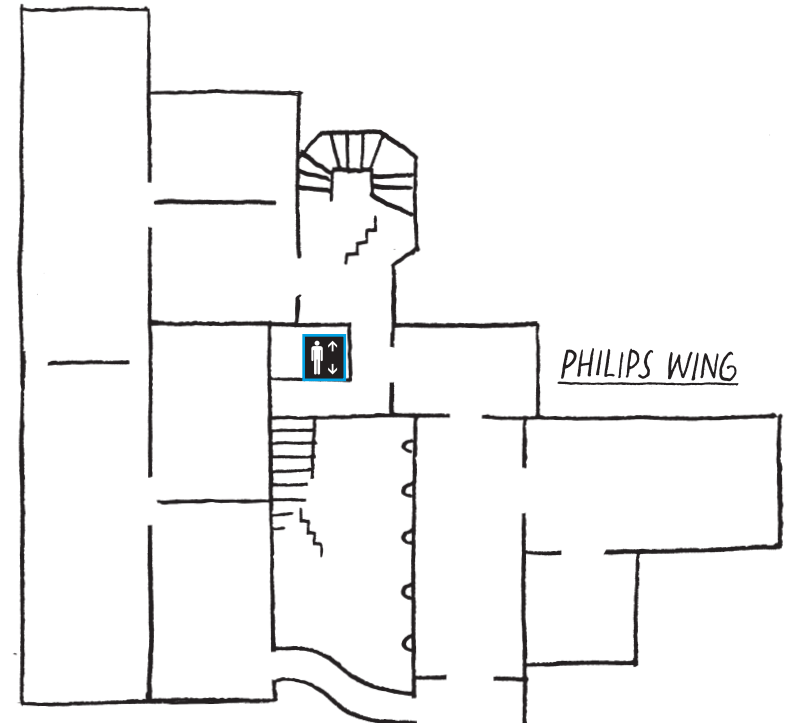
1.18  
G.H. BREITNER



1.18  
PAUL GABRIËL

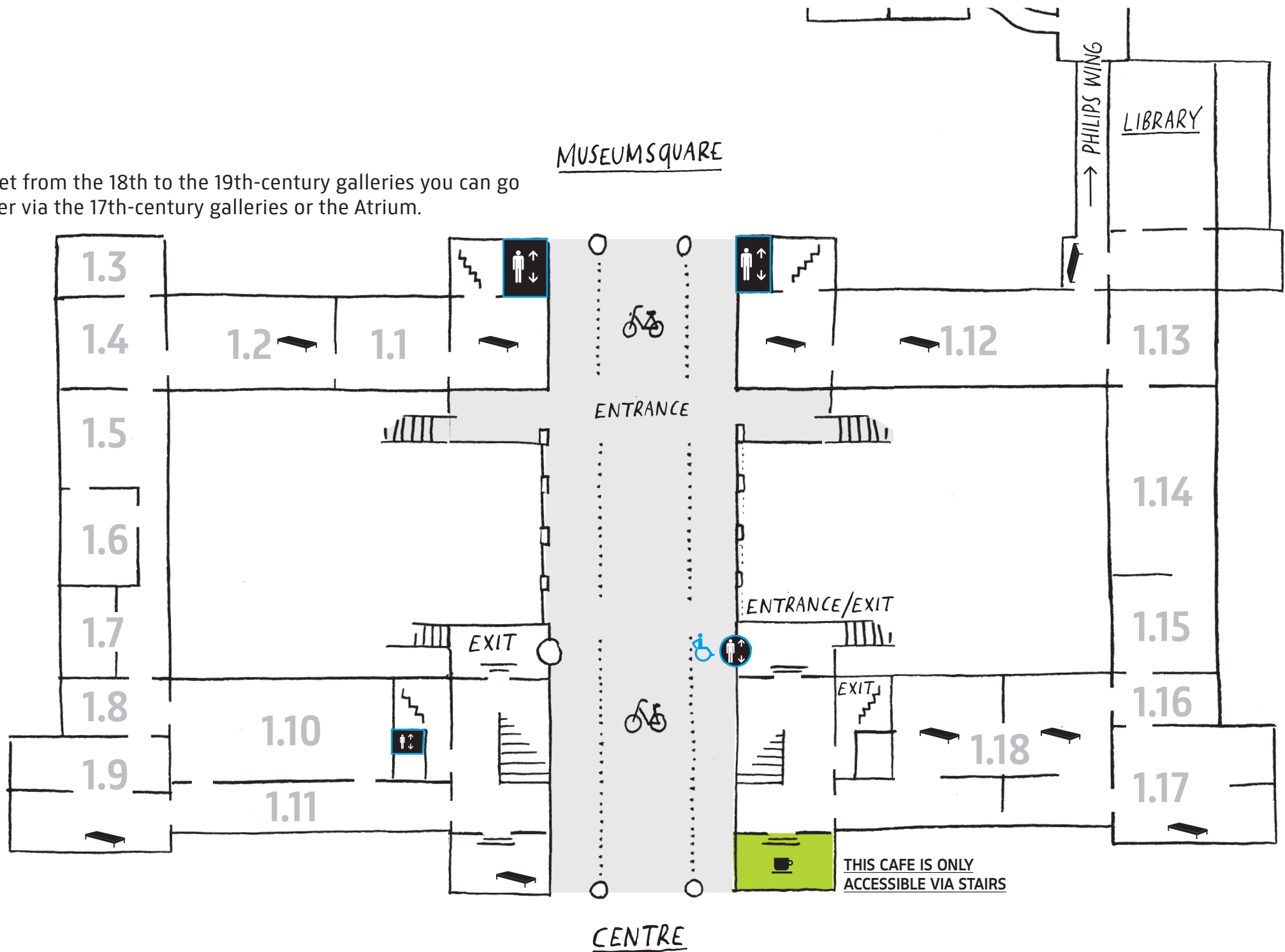


1.18  
VINCENT VAN GOGH



# 1

To get from the 18th to the 19th-century galleries you can go either via the 17th-century galleries or the Atrium.



1700–1800

1

1800–1900





2.1  
WILLEM VAN ORANJE



2.5  
HUGO DE GROOT



NIGHT WATCH GALLERY  
REMBRANDT, NIGHT WATCH



2.15  
WILLIAM REX



2.20  
DOLL'S HOUSES



2.6  
HENDRICK AVERCAMP



GALLERY OF HONOUR  
REMBRANDT, THE JEWISH BRIDE



2.22  
DELFTWARE



2.8  
REMBRANDT



2.9  
NOVA ZEMBLA



GALLERY OF HONOUR  
JOHANNES VERMEER  
LITTLE STREET



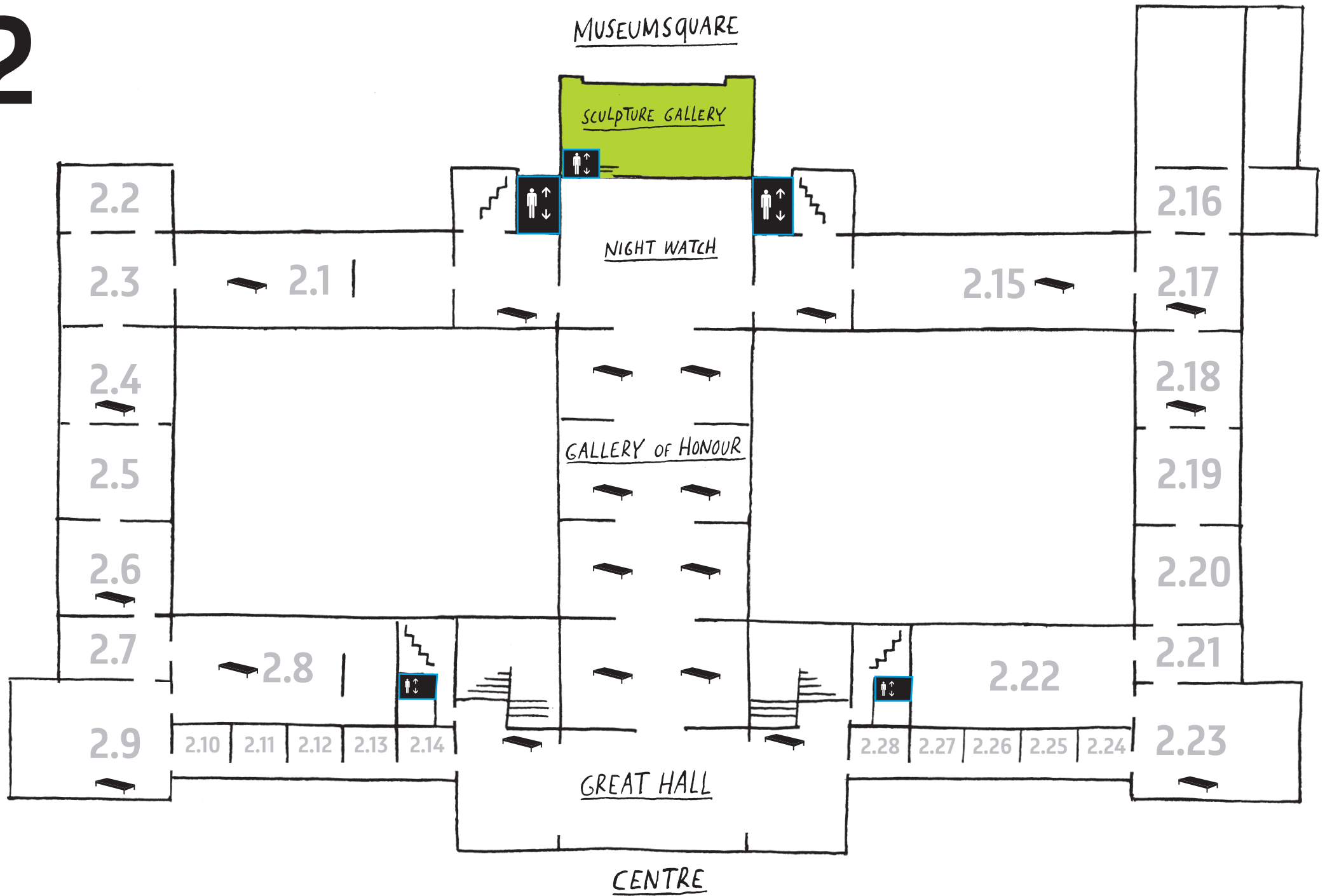
JOHANNES VERMEER  
THE MILKMAID



2.27  
GERRIT ADRIAENSZ. BERCKHEYDE



2



1600-1650

2

1650-1700



**3.4**  
YVES SAINT LAURENT



**3.3**  
KAREL APPEL



**3.3**  
CONSTANT



**3.2**  
GERRIT RIETVELD



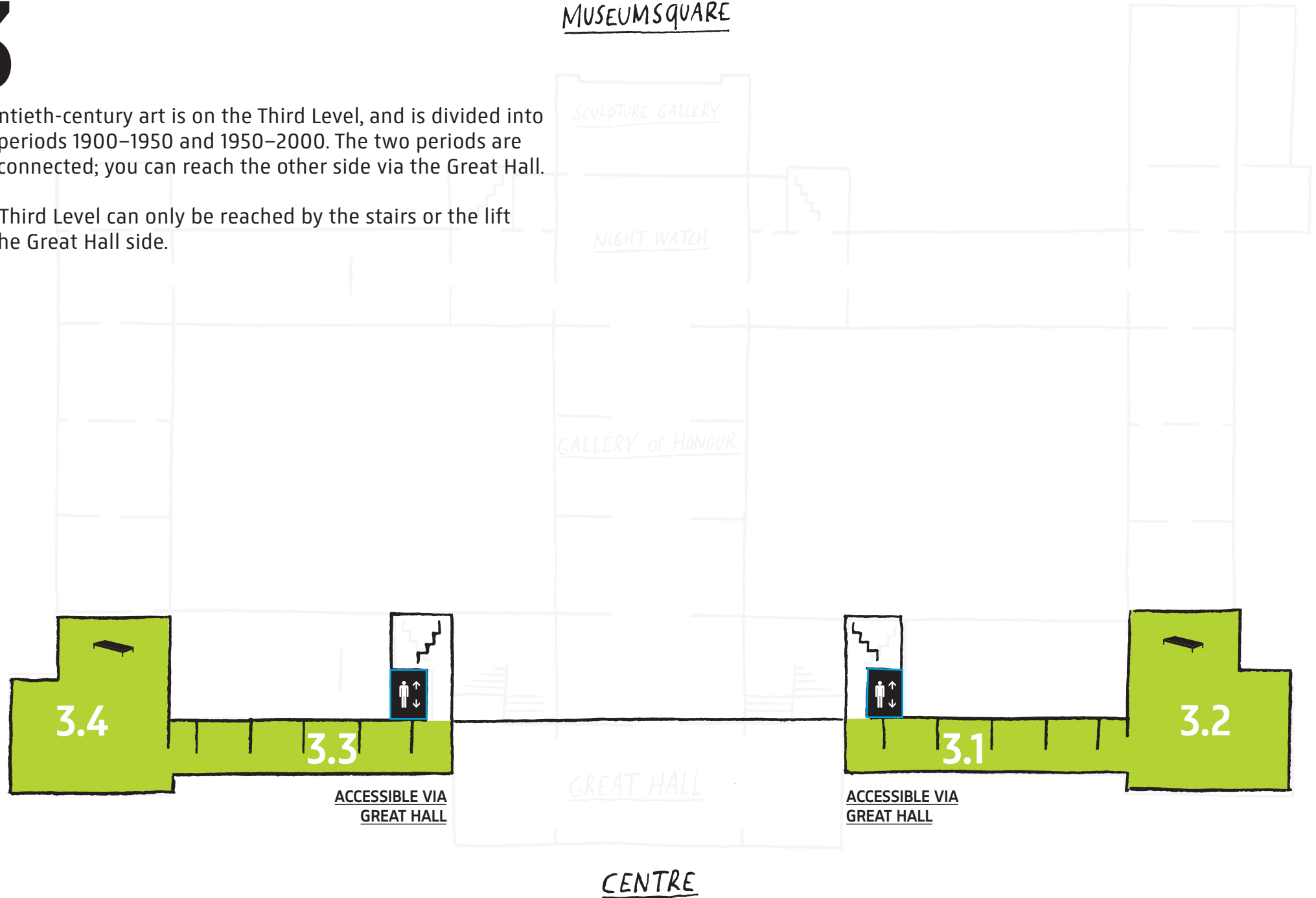
**3.2**  
AIRCRAFT

# 3

## MUSEUMSQUARE

Twentieth-century art is on the Third Level, and is divided into the periods 1900–1950 and 1950–2000. The two periods are not connected; you can reach the other side via the Great Hall.

The Third Level can only be reached by the stairs or the lift on the Great Hall side.



1950–2000

3

1900–1950

FLOWER PYRAMID, DE METAALE POT (ATTRIBUTED TO), AFTER LAMBERTUS VAN EENHOORN

